

# **ABET** TECHNOLOGIES

Function Focused Innovation™

## **DLD-100 SERIES Digital Light Detectors**

### **Installation Instructions**



**Abet Technologies, Inc.**  
382 Timberlane Drive, Orange CT 06460  
Tel: 203-540-9990 Fax: 203-874-6257  
[www.abet-technologies.com](http://www.abet-technologies.com)

I-DLD Rev B  
Copyright © 2006, Abet Technologies, Inc.  
August 2006

## Introduction,

Thank you for choosing a DLD-100 series Digital Light Detector for your work. Abet Technologies' design goal was to take advantage of the power of digital technologies to create an easy to use instrument. Please tell your friends and colleagues if we succeeded. Please tell us if we missed something and we will try to make it even easier to use.

A complete manual for this detector can be found in the Installation disk root directory. It will guide you through installation and use of various demonstration and application programs as well as give you general information on your detector usage. Since, in all probability, you will look at the manual once and then never again, we will save a few trees by not including a printed version.

Here we will walk you through the few steps required to get the detector connected to the PC.

### 1 Please read before installing

Your shipment includes the detector you chose, a power supply, any accessories you ordered, and an installation CD. The CD includes driver software for Microsoft® Windows XP or later, a .pdf copy of the manual as well as a number of demonstration and application programs. A USB cable is not included unless ordered separately.

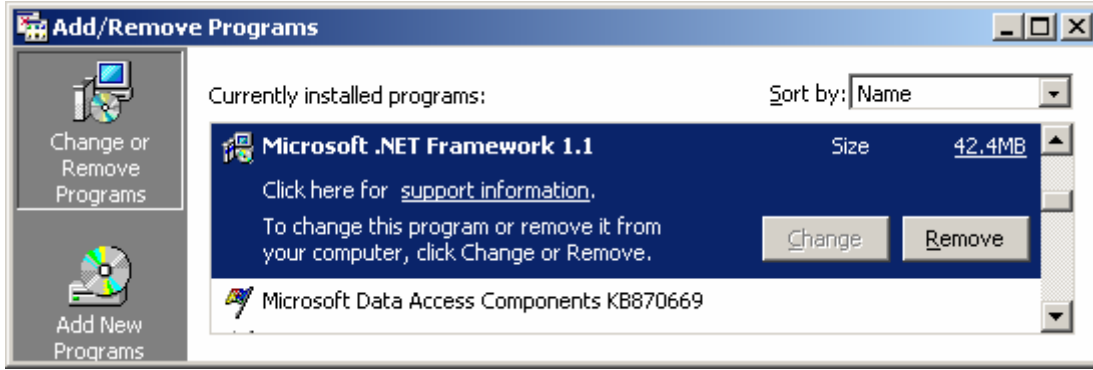
Your Digital Light Detector fully conforms to PnP Windows technology. Here are the minimal system requirements that will assure trouble free operation:

- Windows XP, service pack 2 or higher
- Memory 256 MB or more
- USB 2.0 hub (check your computer documentation to determine the version of your USB hub). **Please note:** add-on USB 2.0 boards can occasionally create communication problems – we strongly suggest that you use this detector with a computer equipped with a manufacturer's installed USB 2.0 hub.
- MFC71.dll, MFC71u.dll and Msvcr71.dll are present in your Windows\System32 folder
- Microsoft .NET Framework 1.1 installed on your computer

Please go to Windows Update Website, <http://www.microsoft.com/downloads/search.asp> to obtain and install any of the required missing components. For your convenience the installation CD contains a "How to obtain Microsoft support files from online services.htm" document, which can help to guide you through the process if you need extra help.

If any of the MFC71.dll, MFC71u.dll or Msvcr71.dll are needed, reasonably recent versions of those files can be found in the root folder of the installation CD. However, we suggest checking Microsoft web site for their most up to date versions. Please place these .dll's in the Windows\System32 folder of your computer.

The Microsoft .NET Framework 1.1 is the latest Windows XP technology required by many applications. You can check for its presence by going to the Control Panel and Clicking on Add/Remove Programs. Please use the slider on the right hand side to scroll through all the installed programs since there is often a large empty space between a few initial software names and the rest of the installed programs in this function.

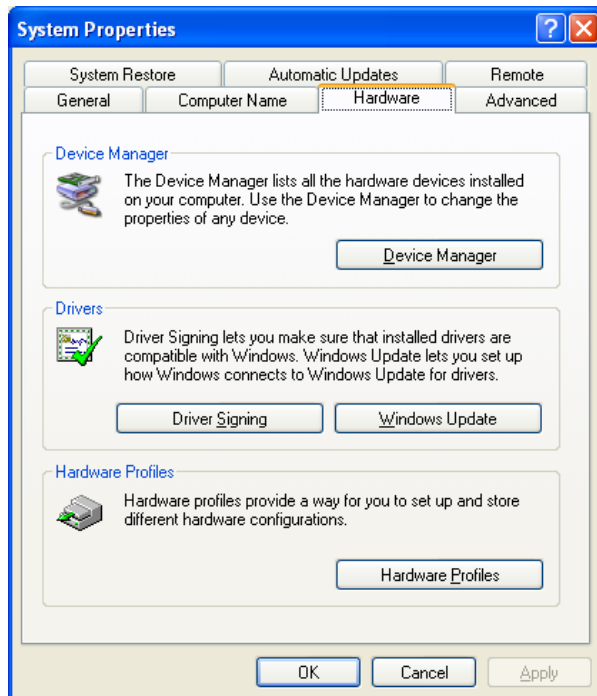


Microsoft .NET Framework 1.1, if missing, needs to be installed after a download from the Microsoft site.

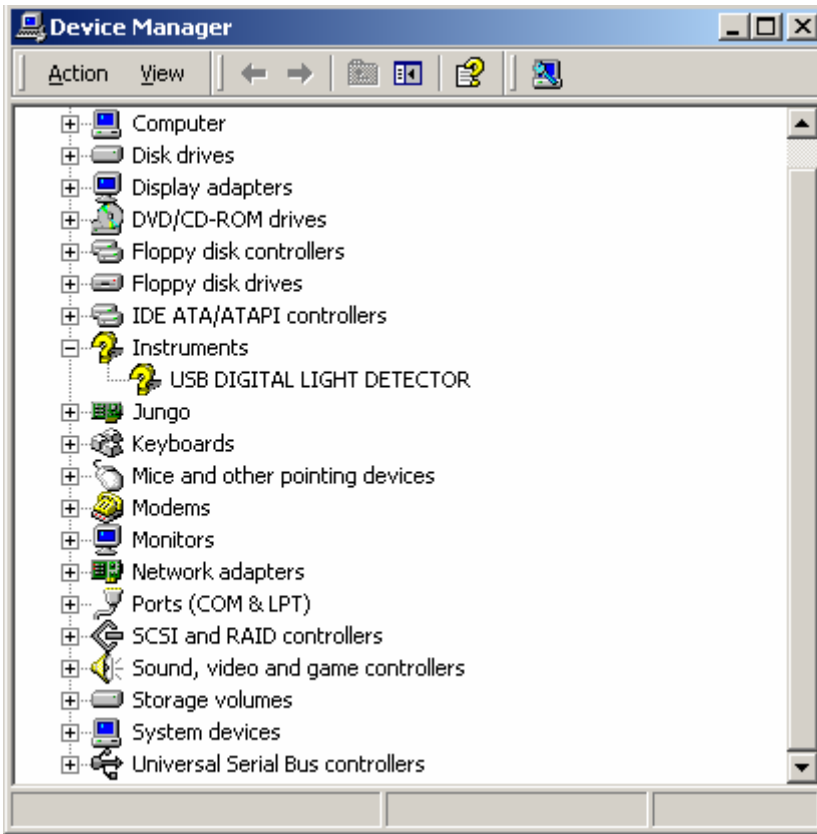
## 2 Installation

1. Connect your DLD to the USB 2.0 hub
2. Connect the power supply to the DLD and plug the power supply into the mains
3. Windows will recognize the new hardware and request the location of the required drivers. Insert the installation and point to that drive to complete the first installation steps. Follow system instructions. At the end of this step the following should have occurred:
  - a. AbetGeneric.inf installation file has been compiled by the system and placed into Windows/INF folder as OEMxx.inf and OEMxx.pnf files
  - b. Abet.sys has been copied into Windows/System32/drivers/ folder
  - c. DLD\_AX.ocx has been copied into Windows/System32 and registered

You can confirm successful installation by opening the Control Panel, System, Device Manager:



and checking the list of registered instruments for the USB Digital Light Detector entry:



## 2.1 Installing Application and Demo programs

The installation CD contains a number of demonstration and application programs. Demonstration programs are fairly simple and include source code. Use them to quickly get up to speed on using your unit's ActiveX<sup>®</sup> interface to integrate its operation into the Windows software environment you are going to use. Application programs come as .exe files and let you start collecting data right out of the box.

Run the **Setup.exe** program included on your installation CD. This will place all the necessary programs in a new folder. The default path is C:\Program Files\ABET TECHNOLOGIES\AbetDemoSetup\. You will need to go to that folder to run the DLD applications and demos. Once you decide which ones you wish to use more often you can place their shortcuts on your Desktop for fast access.

You will find a complete manual for DLD-100 series detectors in the Installation CD and also copied to the C:\Program Files\ABET TECHNOLOGIES\AbetDemoSetup\ directory (or the directory path and name you chose in the previous step). This manual will guide you through the various ways of using your detector package.

Your detector is now ready for use.

### 3 Warranty and Returns

Abet Technologies warrants that all goods described in this manual (except consumables such as lamps, bulbs, filters, ellipses, etc.) shall be free from defects in material and workmanship. Such defects become apparent within the following period:

1. All products described here, except spare parts: one (1) year or 3000 hours of operation, whichever comes first, after delivery of the goods to the buyer.
2. Spare parts: ninety (90) days after delivery of goods to the buyer.

Abet Technologies' liability under this warranty is limited to the adjustment, repair and/or replacement of the defective part(s). During the above listed warranty period, Abet Technologies shall provide all materials to accomplish the repaired adjustment, repair or replacement. Abet Technologies shall provide the labor required during the above listed warranty period to adjust, repair and/or replace the defective goods at no cost to the buyer ONLY IF the defective goods are returned, freight prepaid, to a Abet Technologies designated facility. If goods are not returned to Abet Technologies, and the user chooses to have repairs made at their premises, Abet Technologies shall provide labor for field adjustment, repair and/or replacement at prevailing rates for field service, on a portal-to-portal basis.

Abet Technologies shall be relieved of all obligations and liability under this warranty of:

1. The user operates the device with any accessory, equipment or part not specifically approved or manufactured or specified by Abet Technologies unless buyer furnishes reasonable evidence that such installations were not the cause of the defect. This provision shall not apply to any accessory, equipment or part which does not affect the safe operation of the device.
2. The goods are not operated or maintained in accordance with Abet Technologies' instructions and specifications.
3. The goods have been repaired, altered or modified by other than authorized Abet Technologies personnel.
4. Buyer does not return the defective goods, freight prepaid, to a Abet Technologies facility within the applicable warranty period.

IT IS EXPRESSLY AGREED THAT THIS WARRANTY SHALL REPLACE ALL WARRANTIES OF FITNESS AND MERCHANTABILITY. BUYER HEREBY WAIVES ALL OTHER WARRANTIES, GUARANTEES, CONDITIONS OR LIABILITIES, EXPRESSED OR IMPLIED, ARISING BY LAW OR OTHERWISE, WHETHER OR NOT OCCASIONED BY ABET TECHNOLOGIES' NEGLIGENCE.

This warranty shall not be extended, altered or varied except by a written document signed by both parties. If any portion of this

agreement is invalidated, the remainder of the agreement shall remain in full force and effect.

#### CONSEQUENTIAL DAMAGES

Abet Technologies shall not be responsible for consequential damages resulting from misfunctions or malfunctions of the goods described in this manual. Abet Technologies' total responsibility is limited to repairing or replacing the malfunctioning or malfunctioning goods under the terms and conditions of the above described warranty.

#### INSURANCE

Persons receiving goods for demonstrations, demo loan, temporary use or in any manner in which title is not transferred from Abet Technologies, shall assume full responsibility for any and all damage while in their care, custody and control. If damage occurs, unrelated to the proper and warranted use and performance of the goods, recipient of the goods accepts full responsibility for restoring the goods to their condition upon original delivery, and for assuming all costs and charges.

#### RETURNS

Before returning equipment to Abet Technologies for repair, please call the Customer Service Department at (203) 540-9990. Have your purchase order number available before calling Abet Technologies. The Customer Service Representative will give you a Return Material Authorization number (RMA). Having an RMA will shorten the time required for repair, because it ensures that your equipment will be properly processed. Write the RMA on the returned equipment's box. Equipment returned without a RMA may be rejected by the Abet Technologies Receiving Department. Equipment returned under warranty will be returned with no charge for the repair or shipping. Abet Technologies will notify you of any repairs not covered by the warranty, with the cost of the repair, before starting the work.

Please return equipment in the original (or equivalent) packaging. You will be responsible for damage incurred from inadequate packaging, if the original packaging is not used.

Include the cables, connector caps and antistatic materials sent and/or used with the equipment, so that Abet Technologies can verify correct operation of these accessories.

#### SOFTWARE DISCLAIMER

Abet Technologies makes no warranty or representation, either expressed or implied, with respect to the Software or its contents, quality, performance, merchantability, or fitness for a particular purpose. In no event will Abet Technologies, its distributors, or dealers be liable to you or any other party for direct, indirect, special, incidental, consequential, or other damages arising out of the use of or inability to use the Software or its contents even if advised of the possibility of such damage.